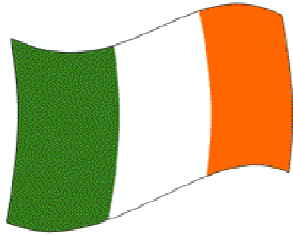


# Ireland



**Programme**  
**Fee \$NZ\***

**Departure**  
**Date(s)**

| Programme | Fee \$NZ* | Departure Date(s)            | Apply by                    |
|-----------|-----------|------------------------------|-----------------------------|
| 16 weeks  | \$9200    | Late August or Early January | Apply by April 20 or Oct 20 |
| 22 weeks  | \$11,500  | Late August Or Early January | Apply by April 20 Or Oct 20 |
| 26 weeks  | \$12,700  | Late August                  | Apply by Oct 20             |
| 40 weeks  | \$17,250  | Late August                  | Apply by Oct 20             |

Application dates are when everything has to be in Ireland. You need to start about three months before this date to allow time for completing the application process with NZIIU.

\*Prices are subject to change without notice as exchange rates fluctuate and contracts are renegotiated.

\*\*Airfares are charged separately.

## Starting and Completion dates

Starting dates are given to us when you have been accepted in Ireland and placed in a school as there are variations between schools and years. The end date is the appropriate number of weeks later.

## Fees

These are higher in Ireland because Irish families are always paid an honorarium for hosting. This is not at commercial rates so you are not a boarder but are part of the family as you would be in any other country.

## Placements

A host family is found for you before you leave and if you have applied at the correct time, you should be in contact with them for at least a month before you leave. While late applications can sometimes be accepted, in such cases your placement in a host family is given to you closer to your departure date.

Host families have to go through an interview and vetting process. Your personality and preferences are taken into account if at all possible, but the supply of generous and welcoming families is not bottomless and you must be prepared to adapt to the situation you are given.

Most placements are around Cork and Dublin and are in the countryside. Our Irish affiliate is keen for students to understand that Ireland has a modern, bustling economy and while the Ireland of whitewashed villages, leprachauns and four leaf clovers can be found, for most of Ireland it is as far in the past and as mythical as New Zealand's pioneering days are for us. Being placed in the countryside means that students will be happiest if they are proactive in seeking out their own local activities and involvement.

Successful placements depend as much upon you as upon the

family you're given. This is a cultural adventure inside an Irish family and an Irish school. Some students stay with the same family for a whole year while others may have two or three families.

Irish society is generally more conservative than NZ.

## On arrival

You'll be given a local orientation and taken to your host family. Your host school is almost certain to be single-sex and to have a Catholic ethos, though people of all religions are welcome.

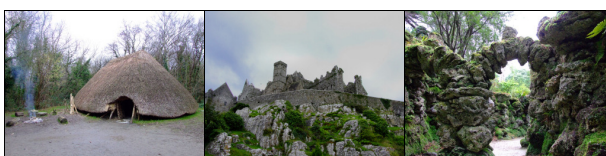
## Eligibility

You can go when you are from 15 to 17 but should not turn 18 during the exchange. You must be enrolled at a NZ high school when you apply, have good academic reports and be in good health. The requirements for Ireland in most respects resemble those for any other country except that you should expect the rules of the exchange to be more strictly adhered to. You will be expected to attend school every day and only approved trips are acceptable.

## Applications

These begin with the simple form in the initial application brochure. It requires basic details, a photo, the permission of your parents or guardians, a copy of your passport and \$50 to convince us that you're serious.

This is followed by a full application which is more exhaustive and takes most people quite a while to complete. It is followed by an interview/chat at home with at least one of your parents/guardians present which takes about two and a half hours. Most people who get to this stage are able to go. If the interview works well, we'll begin looking for a placement for you, booking flights, buying insurance and obtaining a visa. This can take three months so it is good to apply early.



**NZIIU**  
New Zealand Institute for International Understanding  
8 Manukau Road, PO Box 99229, Newmarket, Auckland 1149  
www.student-exchange.co.nz      [ian@nziiu.co.nz](mailto:ian@nziiu.co.nz)